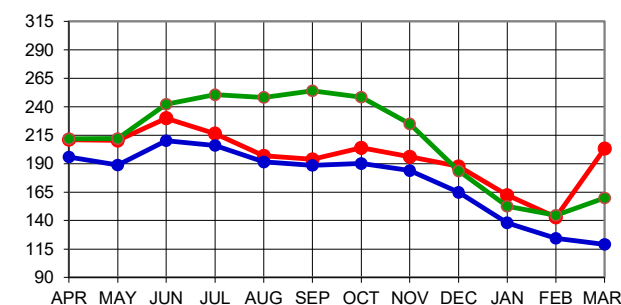


North India - CTC Leaf & Dust

Months	2025/26	2024/25	25 vs 24	2023/24	25 vs 23
APR	211.10	211.91	-0.81	195.81	15.29
MAY	210.52	212.11	-1.59	188.86	21.66
JUN	230.03	242.39	-12.37	210.15	19.88
JUL	216.50	250.47	-33.98	206.17	10.32
AUG	196.78	248.17	-51.39	191.60	5.18
SEP	193.79	254.06	-60.27	188.50	5.29
OCT	204.03	248.46	-44.43	190.13	13.90
NOV	196.22	224.91	-28.69	183.92	12.30
DEC	187.60	183.59	4.01	164.70	22.90
JAN	162.37	152.62	9.75	137.97	24.40
FEB	142.95	144.69	-1.74	124.52	18.43
MAR	203.40	159.87	43.53	119.01	84.38
April to March	198.33	218.77	-20.44	179.90	18.43

Dust : Excluding Orthodox Dust

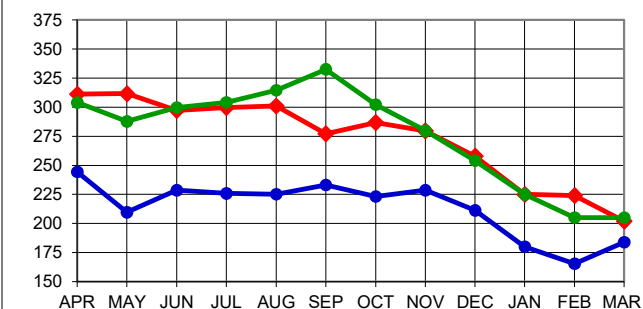
CTC LEAF & DUST N.I. AUCTION AVERAGE



North India - Orthodox Leaf

Months	2025/26	2024/25	25 vs 24	2023/24	25 vs 23
APR	311.30	303.93	7.38	244.42	66.88
MAY	311.79	287.69	24.10	209.82	101.97
JUN	297.24	299.80	-2.56	228.77	68.47
JUL	299.77	304.22	-4.45	226.04	73.73
AUG	301.03	314.61	-13.58	225.35	75.69
SEP	277.10	332.59	-55.49	233.22	43.87
OCT	286.79	302.23	-15.43	223.23	63.56
NOV	279.66	279.92	-0.26	228.64	51.02
DEC	258.06	254.20	3.86	211.32	46.74
JAN	225.00	225.13	-0.13	180.22	44.79
FEB	224.18	205.14	19.04	165.63	58.55
MAR	202.08	205.08	-2.99	184.01	18.07
April to March	281.00	287.63	-6.63	220.78	60.22

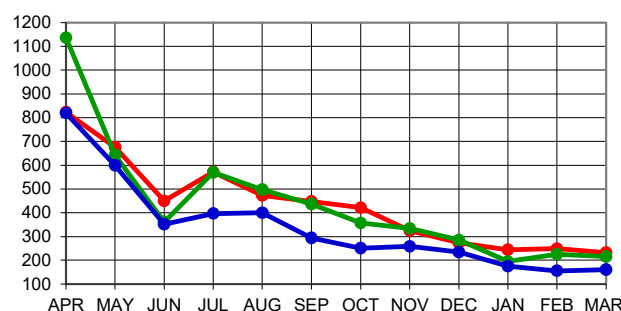
ORTHODOX LEAF N.I. AUCTION AVERAGE



Darjeeling Leaf

Months	2025/26	2024/25	25 vs 24	2023/24	25 vs 23
APR	822.49	1136.32	-313.83	819.19	3.29
MAY	676.24	643.20	33.04	599.39	76.85
JUN	450.20	361.23	88.97	352.18	98.02
JUL	570.74	569.62	1.12	396.47	174.27
AUG	473.40	496.89	-23.49	400.53	72.87
SEP	448.17	437.16	11.01	294.40	153.77
OCT	420.75	356.69	64.06	251.67	169.08
NOV	325.06	333.80	-8.74	259.42	65.63
DEC	273.01	285.33	-12.32	235.24	37.77
JAN	245.22	195.45	49.77	175.58	69.64
FEB	248.61	226.14	22.48	156.02	92.60
MAR	232.77	216.11	16.66	160.68	72.09
April to March	431.09	396.64	34.45	324.45	106.63

DARJEELING LEAF AUCTION AVERAGES



(*Subject to minor revision)