

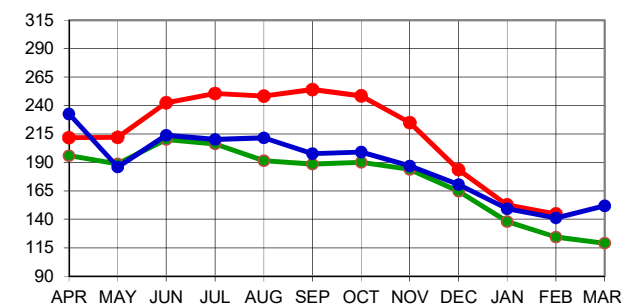


North India - CTC Leaf & Dust

Months	2024/25	2023/24	24 vs 23	2022/23	24 vs 22
APR	211.91	195.81	16.10	232.62	-20.71
MAY	212.11	188.86	23.25	186.08	26.03
JUN	242.39	210.15	32.25	213.80	28.59
JUL	250.47	206.17	44.30	210.19	40.28
AUG	248.17	191.60	56.57	211.65	36.51
SEP	254.06	188.50	65.56	197.79	56.27
OCT	248.46	190.13	58.32	199.12	49.34
NOV	224.91	183.92	40.99	186.97	37.94
DEC	183.59	164.70	18.89	170.54	13.05
JAN	152.62	137.97	14.65	149.31	3.31
FEB	144.69	124.52	20.17	141.17	3.52
MAR		119.01		151.97	
April to February	219.21	180.48	38.73	191.47	27.74

Dust : Excluding Orthodox Dust

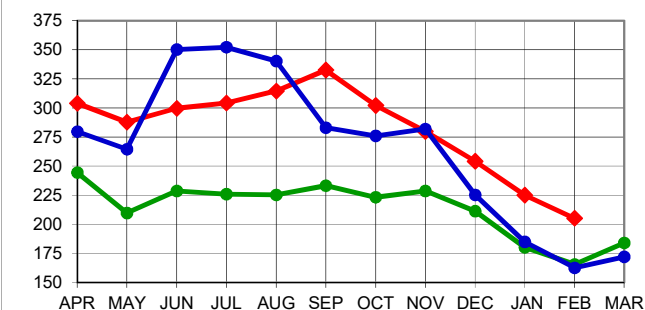
Rs **CTC LEAF & DUST N.I. AUCTION AVERAGE**



North India - Orthodox Leaf

Months	2024/25	2023/24	24 vs 23	2022/23	24 vs 22
APR	303.93	244.42	59.51	279.56	24.37
MAY	287.69	209.82	77.87	264.49	23.20
JUN	299.80	228.77	71.03	350.12	-50.32
JUL	304.22	226.04	78.18	352.16	-47.94
AUG	314.61	225.35	89.27	340.28	-25.67
SEP	332.59	233.22	99.37	282.97	49.62
OCT	302.23	223.23	78.99	276.09	26.14
NOV	279.92	228.64	51.28	281.78	-1.86
DEC	254.20	211.32	42.87	225.33	28.87
JAN	225.13	180.22	44.92	185.00	40.13
FEB	205.14	165.63	39.51	162.69	42.45
MAR		184.01		172.08	
April to February	287.79	220.83	66.96	282.76	5.02

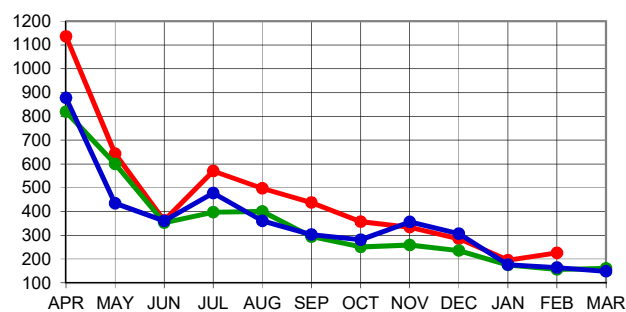
Rs **ORTHODOX LEAF N.I. AUCTION AVERAGE**



Darjeeling Leaf

Months	2024/25	2023/24	24 vs 23	2022/23	24 vs 22
APR	1136.32	819.19	317.13	877.62	258.70
MAY	643.20	599.39	43.81	433.96	209.24
JUN	361.23	352.18	9.05	360.23	1.00
JUL	569.62	396.47	173.16	477.07	92.55
AUG	496.89	400.53	96.36	360.89	136.00
SEP	437.16	294.40	142.77	302.79	134.37
OCT	356.69	251.67	105.02	281.50	75.19
NOV	333.80	259.42	74.38	356.34	-22.54
DEC	285.33	235.24	50.09	306.89	-21.56
JAN	195.45	175.58	19.87	176.45	19.00
FEB	226.14	156.02	70.12	164.40	61.74
MAR		160.68		148.17	
April to February	398.68	325.80	72.88	348.92	49.76

Rs **DARJEELING LEAF AUCTION AVERAGES**



(*Subject to minor revision)