



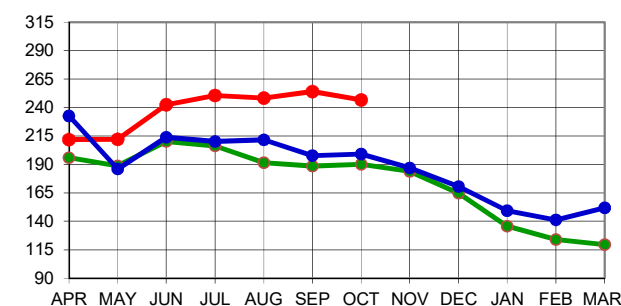
**North India - CTC Leaf & Dust**

Months	2024/25	2023/24	24 vs 23	2022/23	24 vs 22
APR	211.91	195.81	16.10	232.62	-20.71
MAY	212.11	188.86	23.25	186.08	26.03
JUN	242.39	210.15	32.25	213.80	28.59
JUL	250.47	206.17	44.30	210.19	40.28
AUG	248.17	191.60	56.57	211.65	36.51
SEP	254.06	188.50	65.56	197.79	56.27
OCT	246.70	190.13	56.57	199.12	47.59
NOV		183.94		186.97	
DEC		164.70		170.54	
JAN		135.80		149.31	
FEB		123.98		141.17	
MAR		119.55		151.97	

April to October **244.47** **195.14** **49.33** **205.85** **38.62**

# Dust : Excluding Orthodox Dust

Rs **CTC LEAF & DUST N.I. AUCTION AVERAGE**

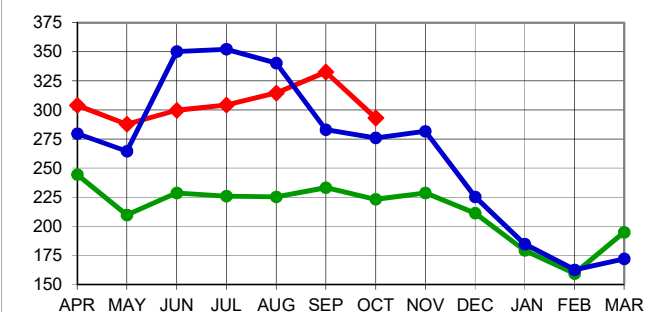


**North India - Orthodox Leaf**

Months	2024/25	2023/24	24 vs 23	2022/23	24 vs 22
APR	303.93	244.42	59.51	279.56	24.37
MAY	287.69	209.82	77.87	264.49	23.20
JUN	299.80	228.77	71.03	350.12	-50.32
JUL	304.22	226.04	78.18	352.16	-47.94
AUG	314.61	225.35	89.27	340.28	-25.67
SEP	332.59	233.22	99.37	282.97	49.62
OCT	293.06	223.23	69.83	276.09	16.97
NOV		228.73		281.73	
DEC		211.32		225.25	
JAN		179.34		184.76	
FEB		159.37		162.69	
MAR		194.76		171.98	

April to October **307.03** **225.90** **81.13** **313.23** **-6.21**

Rs **ORTHODOX LEAF N.I. AUCTION AVERAGE**

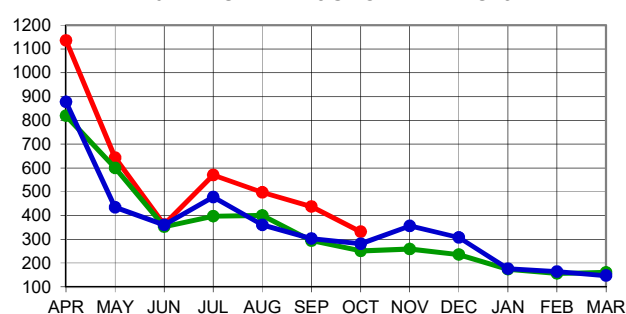


**Darjeeling Leaf**

Months	2024/25	2023/24	24 vs 23	2022/23	24 vs 22
APR	1136.32	819.19	317.13	877.62	258.70
MAY	643.20	599.39	43.81	433.96	209.24
JUN	361.23	352.18	9.05	360.23	1.00
JUL	569.62	396.47	173.16	477.07	92.55
AUG	496.89	400.53	96.36	360.89	136.00
SEP	437.16	294.40	142.77	302.79	134.37
OCT	331.36	251.67	79.69	281.50	49.86
NOV		259.42		356.02	
DEC		235.24		307.23	
JAN		173.60		176.12	
FEB		156.48		164.40	
MAR		160.40		147.12	

April to October **465.32** **384.30** **81.01** **384.59** **80.73**

Rs **DARJEELING LEAF AUCTION AVERAGES**



(\*Subject to minor revision)